



Product Service

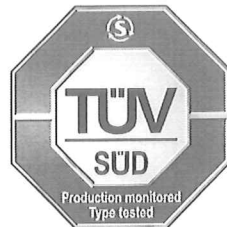
CERTIFICATE

No. B 11 11 51485 985

Holder of Certificate: **Astec International Limited
- Philippine Branch**

3rd & 4th Floor, Techno Plaza One Bldg
#18 Orchard Road
Eastwood City Cyberpark, Bagumbayan
1110 Quezon City
PHILIPPINES

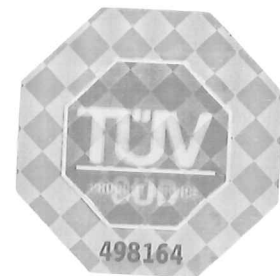
Certification Mark:



Product: **Switch mode power supplies
(Switching Mode Power Supply)**

The product was tested on a voluntary basis and complies with the essential requirements. The certification mark shown above can be affixed on the product. It is not permitted to alter the certification mark in any way. In addition the certification holder must not transfer the certificate to third parties. See also notes overleaf.

Test report no.: 68610901302



Date, 2011-11-24

(Jimmy Huang)

Page 1 of 2

**CERTIFICATE**

No. B 11 11 51485 985

Model(s):

TLP150X-99S12YYYY, TLP150X-99S24YYYY
 ("X" represents any alphanumeric characters or blank that represent customer identity that do not affect safety, "YYYY" represents any alphanumeric characters or blank that represent customer identity that do not affect safety)

Brand Name:

ARTESYN

Parameters:

Rated Input : 100-240VAC, 47-63Hz, max. 2.5A, or
 100-132VAC, 47-440Hz, max. 2.5A
 Rated DC Output : For TLP150X-99S12YYYY:

1) 12V, 8.33A, 100W with natural cooling, or 12.5A, 150W with 200LFM forced air cooling;

2) 12V, 0.5A; 3) 5V, 1.0A.

For TLP150X-99S24YYYY:

1) 24V, 4.15A, 100W with natural cooling, or 6.25A, 150W with 200LFM forced air cooling;

2) 12V, 0.5A; 3) 5V, 1.0A.

Construction : Built-in component

Protection Class : I

Degree of Protection : IPX0

Remarks :

- When installing this equipment, all requirements of the mentioned standard must be fulfilled.
- Refer to the installation and operating instructions from manufacturer for the details of loading condition and operating ambient temperature.
- The power supply is designed to be protectively earthed. Earthing connection and continuity test shall be checked in end product.
- The power supply is intended to be built into an end use equipment.
- The power supply must be installed in accordance with the instruction manual.
- The output was not evaluated as patient connected circuits.
- Compliance with the requirements for EMC shall be evaluated for the end use product.
- The product has been investigated only as a component part for use in equipment where the suitability of the combination is subject to end product investigation.
- The leakage current test shall be checked in end product.
- Risk management has been considered for the relevant clause in this power supply. When using this power supply for a medical device, compliance with the relevant requirements of the risk management for the complete system has to be considered.

Tested according to:

EN 60601-1:2006

Production Facility(ies):

26247

Page 2 of 2