



Product Service

CERTIFICATE

No. Z2 17 09 51485 01488

**Holder of Certificate: Astec International Limited
- Philippine Branch**

3rd & 4th Floor, Techno Plaza One Bldg
#18 Orchard Road
Eastwood City Cyberpark, Bagumbayan
1110 Quezon City
PHILIPPINES



Certification Mark:



**Product: Switching power supply unit
(Switching Mode Power Supply for
Building-in)**

The product was tested on a voluntary basis and complies with the essential requirements. The certification mark shown above can be affixed on the product. It is not permitted to alter the certification mark in any way. In addition the certification holder must not transfer the certificate to third parties. See also notes overleaf.

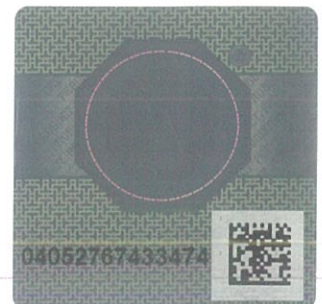
Test report no.: 682301017516

Valid until: 2020-12-19

Date, 2017-09-21

(Yager Bi)

Page 1 of 3





CERTIFICATE
No. Z2 17 09 51485 01488

Model(s): LCM600Q, LCM600W, LCM600Q-T-401, LCM600L, LCM600U, LCM600W-T-401, LCM600Q-N, LCM600N, LCM600L-N, LCM600U-T-404, LCM600W-N

Parameters:

| | |
|------------------------|--|
| Rated Input : | 100-240VAC, 8.5A MAX, 50/60Hz |
| Rated DC Output : | For models LCM600Q and LCM600Q-N: +24V, 27.0A MAX, 600W MAX; +5Vsb, 2.0A MAX (optional) For models LCM600W, LCM600W-N and LCM600W-T-401: +48V, 13.0A MAX, 600W MAX; +5Vsb, 2.0A MAX (optional) For model LCM600Q-T-401: +24V, 18.75A MAX, 450W MAX; +5Vsb, 2.0A MAX (optional) For models LCM600L and LCM600L-N: +12V, 52.0A MAX, 600W MAX; +5Vsb, 2.0A MAX (optional) For model LCM600U: +36V, 18.0A MAX, 600W MAX; +5.0Vsb, 2.0A MAX (optional) For model LCM600N: +15V, 44.0A MAX, 600W MAX; +5.0Vsb, 2.0A MAX (optional) For model LCM600U-T-404: +40V, 15.0A MAX, 600W MAX |
| Construction : | Built-in |
| Protection Class : | I |
| Degree of Protection : | IPX0 |
| Remarks : | See page 3 for details |

Tested according to: EN 60601-1:2006/A1:2013
 EN 60950-1:2006/A2:2013

Production Facility(ies): 62777, 28532



CERTIFICATE

No. Z2 17 09 51485 01488

Remarks :

1. When installing these equipment, all requirements of the mentioned standard must be fulfilled.
2. Refer to installation and operation instructions for details of operating temperature and loading condition.
3. Clearance was evaluated for operating altitude up to 3048m above sea level.
4. This power supply contain output exceeding 240VA, when installing into end system, care must be taken that the output and associated wire(s) may not be touched.
5. Built-in type equipment, suitable enclosure should be provided in end product.
6. These power supplies have been evaluated according to EN 60601-1/A1:2013 with following conditions:
 - The output was not evaluated as patient connected circuits.
 - Compliance with the requirements for EMC shall be evaluated for the end use product.
 - These products have been investigated only as a component part for use in equipment where the suitability of the combination is subject to end product investigation.
 - These power supplies are designed to be protectively earthed. Earthing connection and continuity test shall be checked in end product.
 - The leakage current test shall be checked in end product.
 - The risk management requirements of the standard were not addressed.
 - Clearance / creepage distance and electronic strength were evaluated and fulfilled the requirements for MOPP.