

ThermAsset®2 Tank Wall Plate—Bolted or Welded Design

- Up to 16 feedthroughs
- Stainless steel
- Bolted or welded to the tank wall
- Two-sided hole numbering



The LumaSense Transformer Tank Wall Plate is designed to be easily bolted or welded to any transformer tank wall.

With standard stainless steel construction, this plate can be ordered with up to 16 feedthrough holes and can be fitted with leak-free plugs for unused holes.

The installation can either be done by bolting the plate on the tank wall or by welding the weld ring directly to the tank wall.

Every transformer tank wall plate ordered from LumaSense is rigorously tested with applied pressure to ensure that it is completely leak-free.

Two-sided hole numbering allows easy cable identification for proper allocation of each sensor to the selected optical channel.

Each manufactured plate is ready to receive a stainless steel protection cover.

Typical applications:

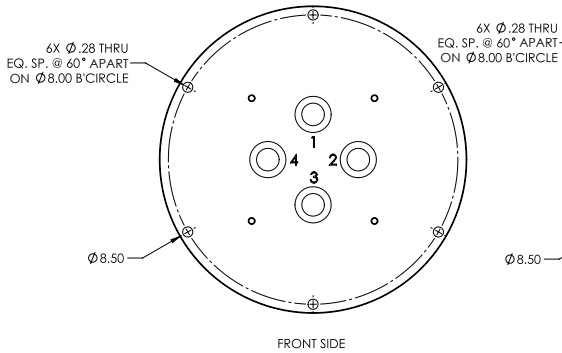
- Power Transformer Tank Wall
- Other Sealed Environments

Technical Data
Specifications

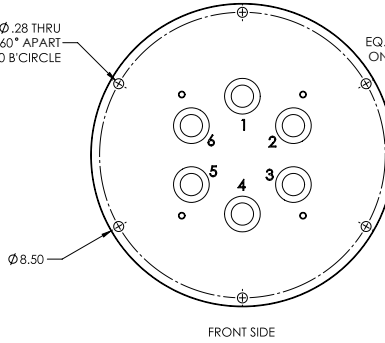
Number of Feedthroughs	Up to 16 (Custom designs available)
Materials	Stainless steel
Installation Methods	Bolted or welded

Product Schematic

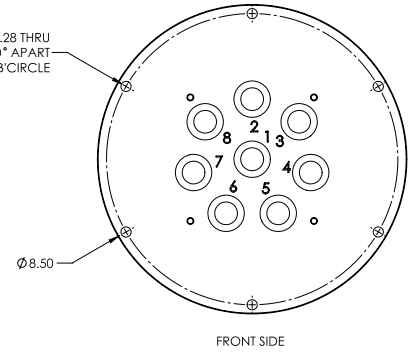
Tank Wall Plate - 4 CH



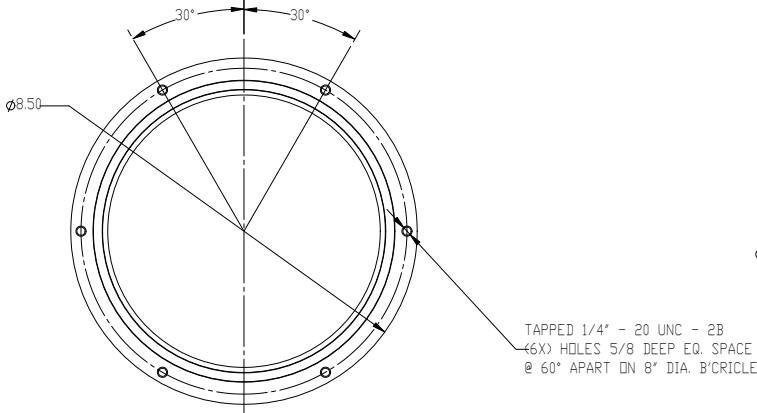
Tank Wall Plate - 6 CH



Tank Wall Plate - 8 CH

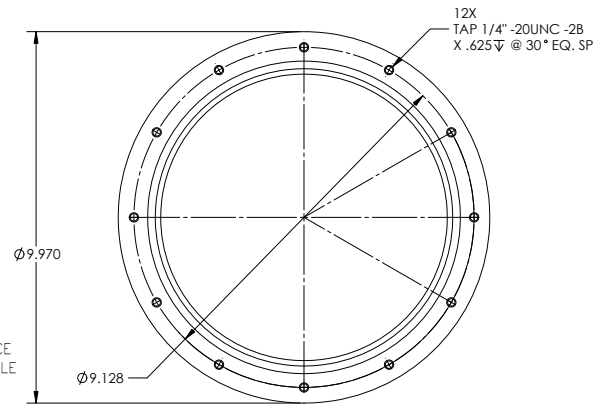


Weld Ring - 8.5"



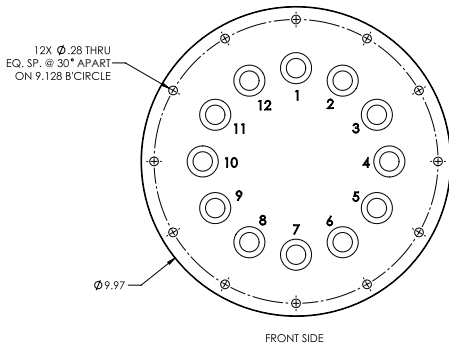
RING, TANKWALL, PENETRATOR
8.5" DIA, CARBON STEEL

Weld Ring - 10"

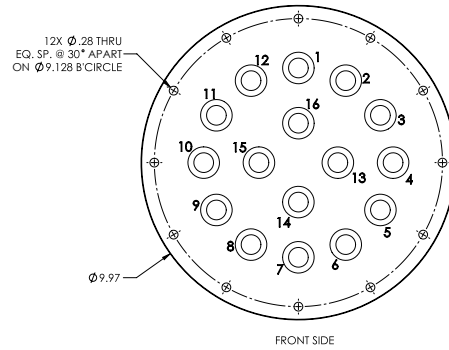


RING, 10.0" DIA 0.0 CARBON
STEEL, TWP 12&16

Tank Wall Plate - 12 CH



Tank Wall Plate - 16 CH



For international contact information,
visit advancedenergy.com.

sales.support@aei.com
+1 970 221 0108

PRECISION | POWER | PERFORMANCE

Specifications are subject to change without notice. Not responsible for errors or omissions. ©2019 Advanced Energy Industries, Inc. All rights reserved. Advanced Energy®, Luxtron®, and AE® are U.S. trademarks of Advanced Energy Industries, Inc.